

T.T Swastik

where Quality is the tradition



TUBULAR POLES
GI-STRUCTURES
CR SHEETS
ERW PIPES



LISTED
3PYV

Swastik PIPE LTD

AN ISO 9001:2015 COMPANY



ABOUT US

Swastik Pipes Ltd is one of the leading manufacturing and exporter of T.T. Swastik Brand high quality Mild Steel/Carbon Steel ERW Black and Galvanized Pipes/Tubes Since 1973. Its advancement state-of-art manufacturing facilities with ISO 9001: 2015 has achieved national and international reputation and appreciation.

At present, it's highly sophisticated and technically competent plants are located at Bahadurgarh, Distt. Jharjjar, Haryana (Unit no.1) with an installed capacity of 1,15,000 of Pipes and 1,25,000 MT of CR Coils/Strips and at Kotwan, Kosi Kalan, Distt. Mathura, Uttar Pradesh (Unit No. 2) with an installed capacity of 1,00,000 MT Swastik Pipes turnover is Crossing 1230.61 USD.

Swastik Pipe has diversified its Manufacturing activities towards production of Solar Module Mounting Structures, Transmission Towers. Steel Tubular Poles and Solar Poles special structure for Railways, Scaffolding and Formwork.

Swastik Pipe Ltd is one of the oldest and leading manufacturer, exporter and supplier of steel pipes and tubes to various heavy engineering industries in India and abroad. Steel pipes and tubes can be used for many purposes such as steel pipes for frames and shafts, steel pipes for bicycle frames, steel pipes for furnitures, cdw pipes for shockers, steel pipes for various structural purposes, steel pipes for various engineering purposes etc. We have a very wide range of steel pipes and tubes products. The lengths of the steel pipes & tubes range from 4m to 6.5m unless otherwise specified by the customers. We manufacture steel pipes and tubes in various shapes and size such square, round, rectangular and elliptical or any special shape.

Swastik Pipe Ltd brings the latest modern manufacturing technology. Automatic temperature control of voltage stabilizing and other electrical parameters so that no fluctuation of heat/voltage/current takes place irrespective of the speed/thickness, thereby yielding uniform bead inside the pipe and no friction loss. All pipes are subjected to all required physical and chemical tests before reaching to customer. The company has a well-maintained laboratory with provisions for offline testing at different stages of production.

The consumer of Swastik Pipe Ltd is confident that only the finest quality of steel and zinc goes into production. Stringent Quality Control is exercised with latest facility right from the selection of raw material to the finished product. All tubes are subjected to extensive test including the hydraulic test, so that there is no leakages and before leaving, pipes pass through prescribed quality control process to ensure the best quality. The company has qualified pre-inspection audit and registered for the third party inspection.

SWASTIK PIPE LTD
AN ISO 9001:2015 COMPANY

EXPORTS

SWASTIK exporting pipes /tubes to more than 40 countries across the Globe.

T.T. Swastik Brand has become a force to reckon with the international Market with its quality being well accepted around the globe, Swastik Pipe Ltd has a satisfied customer base spread over many countries of world ranging from USA, UK, UAE, Australia, Qatar, Oman, Ethiopia, Mauritius, Sri Lanka, Cyprus, Germany, Belgium, Kuwait etc. Swastik Pipes continue their endeavor to increase their customer base to serve them better.



We are pleased to share with you that Swastik Pipe Ltd has proved himself in the international market too and have good presence in Argentina, Australia, Chile, France, Germany, Italy, Korea, Poland, Spain, The Netherlands, Turkey, United Kingdom, Vietnam.

Swastik Pipe Ltd has won his race in the market slow and steadily and has reached to a level where USD 400 Million businesses are being generated every year.

With a certification of ISO 9001:2015 and a good hold in the Indian market, we have established an identification of our products in the competitive global market also. Our strong overseas network along with buying agents has made possible for us to export pipes to more than 40 countries.

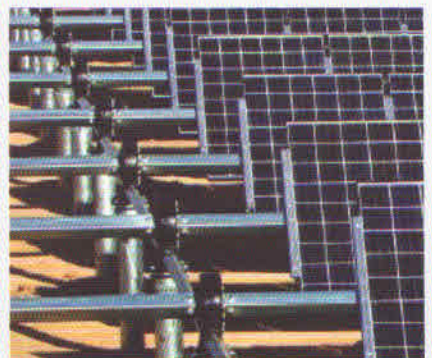
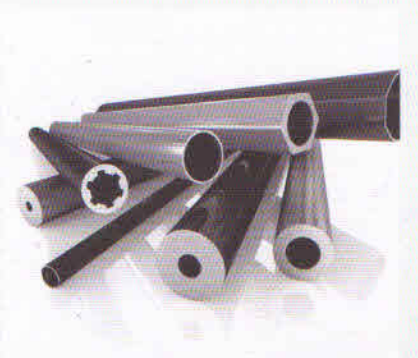
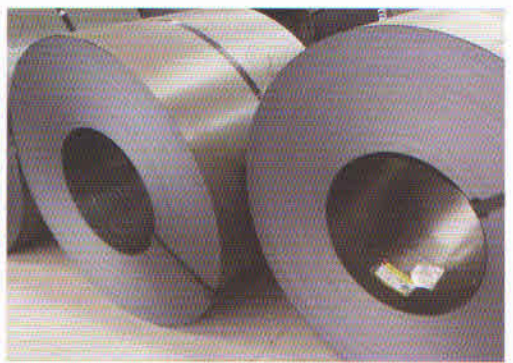
Though our pipes are manufactured according to the Indian specifications, but our products are also in compliance with the international standards so as to make the process of export simple and fast. This has helped our brand in becoming a symbol of excellence and first choice in the global market..

Due to our committed approach towards providing quality products, we have been catering to the requirements of a large clientele all across the globe.

Swastik Pipe Ltd use raw material of premium quality i.e. prime steel from SAIL - Steel Authority of India Limited, Tata Steel Limited and high purity zinc is being sourced from Hindustan Zinc Limited, which makes us comfortable to supply the quality material all over the world

We have already made our presence in the International market and our products are well received and used around the globe. We are exporting our products to various countries under the brand name of **T.T SWASTIK**

PRODUCT RANGE



INFRASTRUCTURE

We have a state-of-the-art infrastructure with complete facilities for production and shipment of finished goods. At our in-house production unit, all work from designing to finalization is done. With latest plant and installed machinery, our set-up enables us to undertake bulk production operation very efficiently. Moreover, we have a highly committed and motivated workforce dedicated to achieve complete customer satisfaction.



Swastik Pipe Ltd has its state-of-the-art manufacturing plant at Bahadurgarh in Haryana (Unit-1) and at Kotwan, Kosi Kalan, Distt. Mathura in Uttar Pradesh (Unit-2). Equipped with all the latest machines and sophisticated testing equipments, we are capable of producing products, which can fulfill different requirements of our clients.



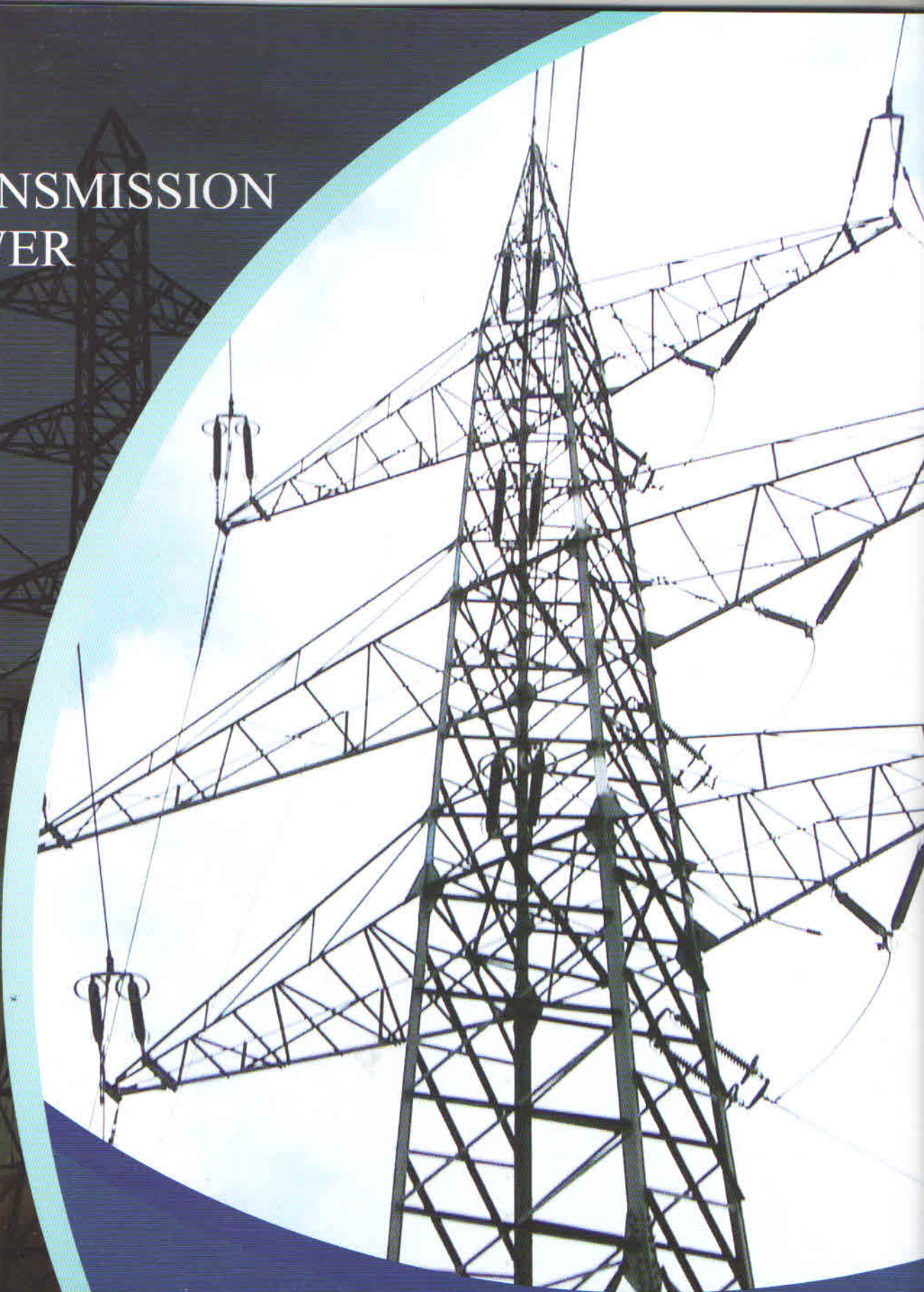
We have sophisticated machines and technology to produce CR Coils, galvanized coil, ERW tubes, steel galvanized coil, CRCA coils and sheets and galvanized products in desired specifications and finishes. Continuous Hot-Dip galvanizing mill roll out galvanized coils of International quality. These lines are supported with on line tension leveling, trimming lines and skin pass mills, to take care of special requirements of customers in terms of coating mass, width, thickness etc.



The company has the capacity to produce 2,40,000 MT of finished goods annually. Modernization of the manufacturing facilities, stress on technological innovation and training of employees at all levels is a continuous process at Swastik Pipes Limited. Our research professionals constantly perform research and development operations, which leads us to introduce product innovation and produce pipes with enhanced durability, higher efficiency and low maintenance.



TRANSMISSION TOWER



STEEL TUBULAR POLES



SOLAR MOUNTING STRUCTURES

Solar Mounting Structures

Solar power production is the latest growing industry in India considering the demand for new resources of energy increasing with the growing population, Swastik Pipe Ltd. is now actively engaged Manufacturing & Supply Solar Mounting Structures. All products are thoroughly inspected for quality check during every step of production as per specifications & approved drawings.

Being the largest cold roll formed steel section manufacturers in India, Swastik Pipe Ltd has supplied mounting structures and structural components to various solar plants, totaling more than 250 MW. Our integrated state-of-the-art plant at Bahadurgarh (Haryana) is well equipped with latest plant and machinery with galvanizing and laboratory facilities and Cold Rolled forming machines producing products as per national and international standards. The size range is continuously being extended to meet the growing needs of the customers.

Main Products :

- Ground Mounting Structures
- Roof Mounting Structures
- Structures as per customer requirement

Available in following variations :

- Fixed type mounting structures
- Seasonal tilt-controlled module mounting
- structures Single axis daily tracking structures

Finish of fabricated Structure :

- Hot-Dip Galvanized
- Pre-galvanized (GP Sheet)



Specification

Thickness :

1.2mm to 4mm

Length :

As per customer requirement

Material :

CR Steel, HR Steel, Galvanized Steel

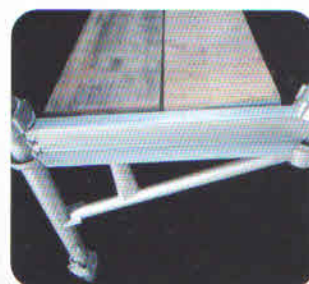
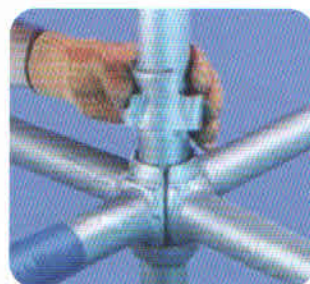
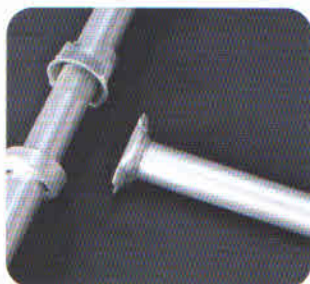
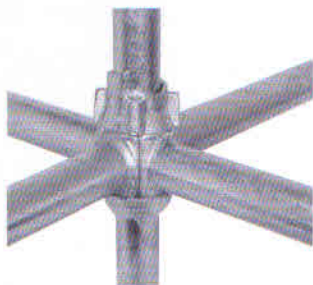
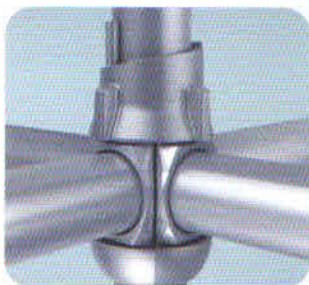
Yield Strength :

245MPA to 550MPA

Galvanization Thickness :

80 microns - 120 microns

SCAFFOLDING CUPLOCK SYSTEM / ACCESSORIES

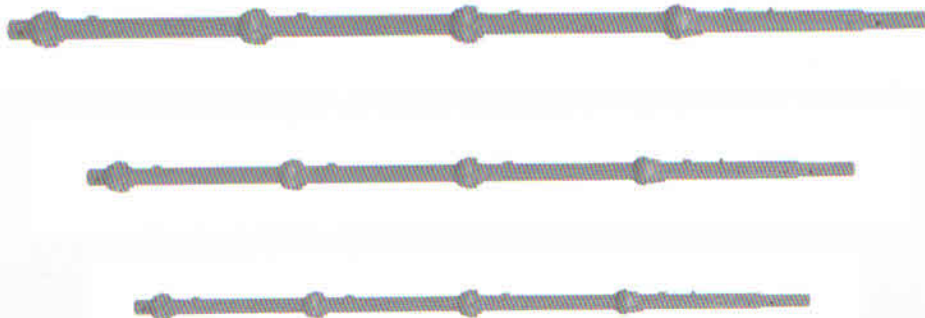


CUPLOCK VERTICAL / HORIZONTAL

OPEN ENDED VERTICAL/ STANDARD

Kuplok vertical/standards are manufactured out of 40nb ERW tubes conirfing to IS1239/1161.

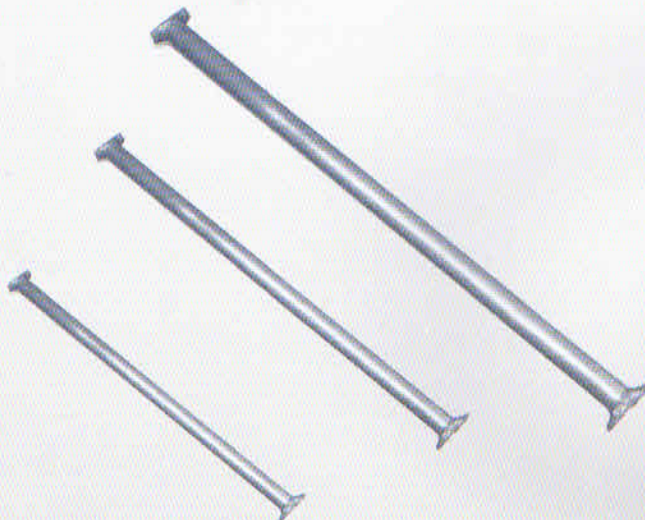
All size of Kuplok menioned below can be supplied with capive mobile top cups made up of malleable sasing /S.G IRON casing/forging to enable it to withstand rough handling at site. The verisals are welded at 500mm center to center. These can be used for assess and support. They have unique node point that enables four sonnesions in one.



KUPLOK HORIZONTAL/LEDGERS

Ledgers are welded with forged blades at both ends with minimum projesion to resist damages at side, and losates itself in the sup joints on the standards/verisal.

These horizontals are available in various sizes decided ater calculaion of the load fastors and assess requirements.



PRECISION PIPE

We have capacity of 30,000 MT per annum for ERW precision tubes. Swastik precision tubes are used in almost all industrial sectors like machine and tools, automotive, furniture and general engineering.

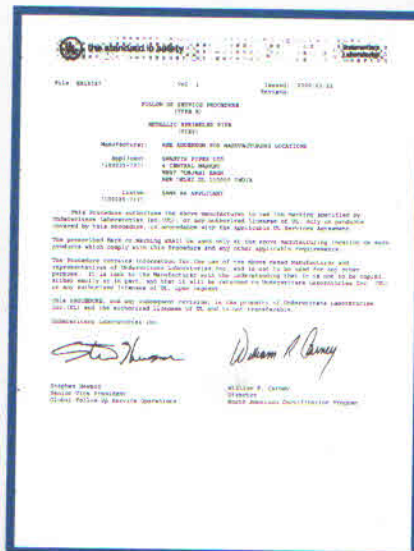
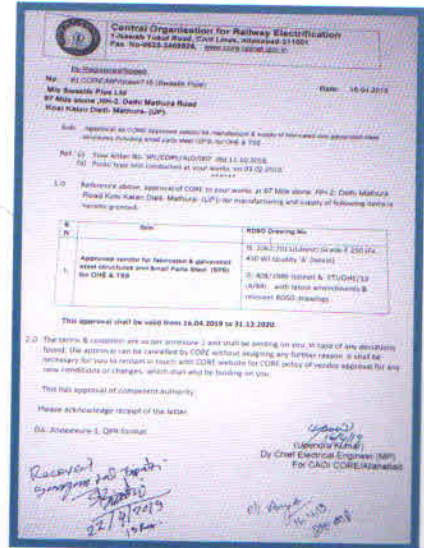
Quality

Swastik is fully equipped with advanced and integrated quality assurance system, to produce the tubes as per the national and international standards.

SIZE RANGE OF PRECISION TUBES

Sr. No.	TUBE OD (mm)	TUBE OD (inch)	G A U G E / T H I C K N E S S A V A I L A B L E														
			24	23	22	21	20	19	18	17	16	15	14	13	12	10	9
			D.55	0.60	0.70	0.50	0.50	1.00	1.20	1.40	1.60	1.85	2.00	2.30	2.5	2.9	3.25
1	12.7*	1/2"	✓	✓	✓	✓	✓	✓	✓	✓	✓						Kosi
2	15.88	5/8"	✓	✓	✓	✓	✓	✓	✓	✓	✓	✓	✓	✓			
3	18.25*						✓	✓	✓	✓	✓	✓	✓	✓			Kosi
4	18.50*	S.B3/8"					✓	✓	✓	✓	✓	✓	✓	✓			Kosi
5	18.70*						✓	✓	✓	✓	✓	✓	✓	✓			Kosi
6	19.05	3/4"	✓	✓	✓	✓	✓	✓	✓	✓	✓	✓	✓	✓			Kosi & bhg
7	21.30					✓	✓	✓	✓	✓	✓	✓	✓	✓			
8	22.23	7/8"		✓	✓	✓	✓	✓	✓	✓	✓	✓	✓	✓	✓	✓	
9	25.40	1"		✓	✓	✓	✓	✓	✓	✓	✓	✓	✓	✓	✓	✓	✓
10	28.58	9/8"		✓	✓	✓	✓	✓	✓	✓	✓	✓	✓	✓	✓	✓	✓
11	31.75	1:1/4"			✓	✓	✓	✓	✓	✓	✓	✓	✓	✓	✓	✓	✓
12	38.10	1:1/2"			✓	✓	✓	✓	✓	✓	✓	✓	✓	✓	✓	✓	✓
14	50.80	2"			✓	✓	✓	✓	✓	✓	✓	✓	✓	✓	✓	✓	✓
16	63.50	2:1/2"					✓	✓	✓	✓	✓	✓	✓	✓	✓	✓	✓
17	76.20	3"							✓	✓	✓	✓	✓	✓	✓	✓	✓
18	20x20*					✓	✓	✓	✓	✓	✓	✓	✓	✓	✓	✓	✓
19	25x25*					✓	✓	✓	✓	✓	✓	✓	✓	✓	✓	✓	✓
20	30x20					✓	✓	✓	✓	✓	✓	✓	✓	✓	✓	✓	✓
21	30x30*					✓	✓	✓	✓	✓	✓	✓	✓	✓	✓	✓	✓
22	40x20*					✓	✓	✓	✓	✓	✓	✓	✓	✓			
23	50x25*					✓	✓	✓	✓	✓	✓	✓	✓	✓			
24	60x30*	from 57.15				✓	✓	✓	✓	✓	✓	✓	✓	✓			
25	40x40*					✓	✓	✓	✓	✓	✓	✓	✓	✓	✓	✓	✓
26	60x40*							✓	✓	✓	✓	✓	✓	✓	✓	✓	✓
27	Capsule 33x13*								✓	✓	✓	✓	✓	✓			

CERTIFICATIONS



The Steel division of Swastik Pipe Ltd has been awarded the prestigious ISO 9001-2015 Certificate. **Third Party Inspection Agencies who inspect / Assess our products / work on behalf of our clients** International Inspection agencies like **SGS, DNA, BVQI, TUV** and many more.



TECHNICAL DATA OF BLACK & GALVANISED STEEL TUBES AS PER IS - 1239 (PART-I) / EN : 10255

NOMINAL BORE (NB) mm inches	CLASS	OUTSIDE DIAMETER		WALL THICKNESS		PLAIN ENDS		SCREWED & SOCKETED	
		MIN MM	MAX MM	MM	SWG	Kg/Mg	Mtrs/Tonne	Kg/Mtr	Mtrs/Tonne
15 (½")	L	21.00	21.40	2.00	14	0.947	1056	0.956	1046
	M	21.00	21.80	2.60	12	1.21	826	1.22	820
	H	21.00	21.80	3.20	10	1.44	694	1.45	690
20 (¾")	L	26.40	26.90	2.30	13	1.38	725	1.39	719
	M	26.50	27.30	2.60	12	1.56	641	1.57	637
	H	26.50	27.30	3.20	10	1.87	535	1.88	532
25 (1")	L	33.20	33.80	2.60	12	1.98	505	2.00	500
	M	33.30	34.20	3.20	10	2.41	415	2.43	412
	H	33.30	34.20	4.00	8	2.93	341	2.95	339
32 (1¼")	L	41.90	42.50	2.60	12	2.54	394	2.57	389
	M	42.00	42.90	3.20	10	3.10	323	3.13	319
	H	42.00	42.90	4.00	8	3.79	264	3.82	262
40 (1½")	L	47.80	48.40	2.90	11	3.23	310	3.27	306
	M	47.90	48.80	3.20	10	3.56	281	3.60	278
	H	47.90	48.80	4.00	8	4.37	229	4.41	227
50 (2")	L	59.60	60.20	2.90	11	4.08	245	4.15	241
	M	59.70	60.80	3.60	9	5.03	199	5.10	196
	H	59.70	60.80	4.50	7	6.19	162	6.26	160
65 (2½")	L	75.20	76.00	3.20	10	5.17	175	5.83	172
	M	75.30	76.60	3.60	9	6.42	156	6.54	153
	H	75.30	76.60	4.50	7	7.93	126	8.05	124
80 (3")	L	87.90	88.70	3.20	10	6.72	149	6.89	145
	M	88.00	89.50	4.00	8	8.36	120	8.53	117
	H	88.00	89.50	4.80	6	9.90	101	10.10	99
100 (4")	L	113.00	113.90	3.60	9	9.75	103	10.00	100
	M	113.10	115.00	4.50	7	12.20	82	12.50	80
	H	113.10	115.00	5.40	5	14.50	69	14.80	68
125 (5")	M	138.50	140.80	4.80	6	15.90	63	16.40	61
	H	138.50	140.80	5.40	5	17.90	56	18.40	54
150 (6")	M	163.90	166.50	4.80	6	18.90	53	19.50	51
	H	163.90	166.50	5.40	5	21.30	47	21.90	46

TOLERANCE

Thickness: Light tubes

: -8% + Not Limited

Medium & Heavy tubes

: -10% + Not Limited

Weight : 1. Single tube (Light Series)

: +10% -8%

2. Single tube (Medium & Heavy Series)

: ±10%

3. For quantities per load of 10 tonnes min. (Light Series)

: +7.5%-5%

4. For quantities per load of 10 tonnes min. (Medium & Heavy Series)

: ±7.5%

Length : Light, Medium & Heavy tubes

: Random length of 4 to 7 meters unless specified otherwise.

TECHNICAL DATA OF PIPES CONFORMING TO ASTM A-53 GR. A & B SCH.40

NSE Designator	DN Designator	Outside Diameter		Wall Thickness		Mass of Plain End Pipes		Test Pressure	
		inch	mm	inch	mm	Kg./Mtr	lb/ft	Grade A Mpa	Grade B Mpa
½	15	0.840	21.3	0.109	2.77	1.27	0.83	4.8	4.8
¾	20	1.050	26.7	0.113	2.87	1.69	1.13	4.8	4.8
1	25	1.315	33.4	0.133	3.38	2.50	1.68	4.8	4.8
1 ¼	32	1.660	42.2	0.140	3.56	3.39	2.27	8.3	9.0
1 ½	40	1.900	48.3	0.145	3.68	4.05	2.72	8.3	9.0
2	50	2.375	60.3	0.154	3.91	5.44	3.66	15.9	17.2
2 ½	65	2.875	73.0	0.203	5.16	8.63	5.80	17.2	17.2
3	80	3.500	88.9	0.216	5.49	11.29	7.58	15.3	17.2
3 ½	90	4.000	101.6	0.226	5.74	13.57	9.12	14.0	16.3
4	100	4.500	114.3	0.237	6.02	16.07	10.80	13.1	15.2
5	125	5.563	141.3	0.258	6.55	21.77	14.63	11.5	13.4
6	150	6.625	168.3	0.280	7.11	28.26	18.99	10.5	12.3
8	200	8.625	219.1	0.322	8.18	42.55	28.58	9.2	10.8
10	250	10.750	273.0	0.365	9.27	60.29	40.52	8.4	9.9
12	300	12.750	323.8	0.406	10.31	79.70	53.57	7.9	9.2

Tolerances

Outside Diameter	Pipe Size up to & including DN 40	+/- 0.4 mm
	Pipe Size DN 50 or Larger	+/- 1%
Thickness		-12.5% (max)
Weight		+/- 10%

Testing

Online NDT	For Pipes NPS 2 (DN 50) or larger Weld seam of each pipe shall be tested by Eddy Current Test For pipes up to & including DN 50
Bend Test	Bending angle 90° Bending radius 12 times to the OD of Tube (no crack in body & weld) For pipes over DN 50
Flattening	1. Flatten up to 2/3 of OD for ductility of weld 2. Flatten up to 1/3 of OD for ductility of steel 3. Full Flattening for testing of lamination

Mechanical Properties

	Grade A	Grade B
Yield Strength	205 Mpa (Min)	240 Mpa (Min)
Tensile Strength	330 Mpa (Min)	415 Mpa (Min)
Elongation	As per ASTM A-53	

Chemical Properties

Composition, Max,%

	Carbon	Manganese	Phosphorus	Sulphur	Copper	Nickel	Chromium	Molybdenum	Vanadium
Grade A	0.25	0.05	0.95	0.045	0.50	0.40	0.40	0.15	0.08
Grade B	0.30	0.05	1.20	0.045	0.50	0.40	0.40	0.15	0.08

Cu + N + Cr + Mb + V < 1%

Galvanizing

Minimum	0.490 Kg/Sq. Mtr.
Average	0.550 Kg/Sq. Mtr.

OUR CLIENTS



MAHANAGAR
GAS



WAAREE



HINDUSTAN POWER



LANCO
Always Inspiring



Rays
Experts
a solar culture...

vikramsolar
CREATING CLIMATE FOR CHANGE

INDOSOLAR